



DESIGNJET Z2100

PHOTO PRINTER SERIES

HP's 8-ink Designjet makes it easy to produce vivid, high-impact, large-format color and b&w prints



Breakthrough color: Achieve consistent & accurate color with the first ever embedded spectrophotometer¹ with i1 Color Technology

- **Automated and simple creation of ICC profiles.** HP's embedded spectrophotometer with i1 Color Technology and an automated workflow bring simplicity and reliability to accurate profiling and precise printer calibration. HP's Advanced Profiling Solution offers additional options for profiling and calibrating your printing system.
- **Expect consistent color from print to print.** Calibrate the printer and begin delivering print-to-print and printer-to-printer color repeatability.
- **Broad gamut coverage:** Up to 82% PANTONE® coverage, and full compliance with prepress standards: SWOP, ISO, GRACOL, EUROSCALE, TOYO, FOGRA, and 3DAP.

True creative expression: Get vivid, long-lasting quality with an 8-ink printing system with HP Vivera pigment inks

- **Create a lasting impression:** HP 70 Vivera pigment inks with an 8-ink printing system achieve a unique combination of consistently outstanding image quality. Water resistant prints resist fading for over 200 years² on a variety of HP creative and specialty media for your photos, posters, presentations and maps.

- **Rich, dark blacks on matte and glossy papers without swapping cartridges.** The HP Three-black ink set consists of matte black, photo black, and light gray HP Vivera pigment ink cartridges that reside in the printer at all times.
- **Achieve consistent results on a wide range of papers.** Choose from a variety of HP papers from plain to glossy, including backlit, indoor banner, and other commercially available papers.

True print confidence: Print with greater confidence thanks to dependable HP technologies

- **Eliminate trial and error with real-time layout and orientation preview.** Take the guess-work out of margins. Save time and materials.
- **Glide effortlessly through color management and printing** with the HP Color Center tool.
- **Save time with HP Printer Utility software.** Monitor the status of printers & supplies and get the latest updates.
- **Expect always-on quality** with automatic servicing routines that are economical and convenient thanks to proactive printhead maintenance.
- **Have your questions answered.** Application settings and color management consultation at your finger tips with the HP Knowledge Center.

¹ In a drop-on-demand inkjet large format printer of its category.

² Display permanence rating by Wilhelm Imaging Research, Inc. on a range of HP creative and specialty media. For details: <http://www.hp.com/go/supplies/printpermanence>

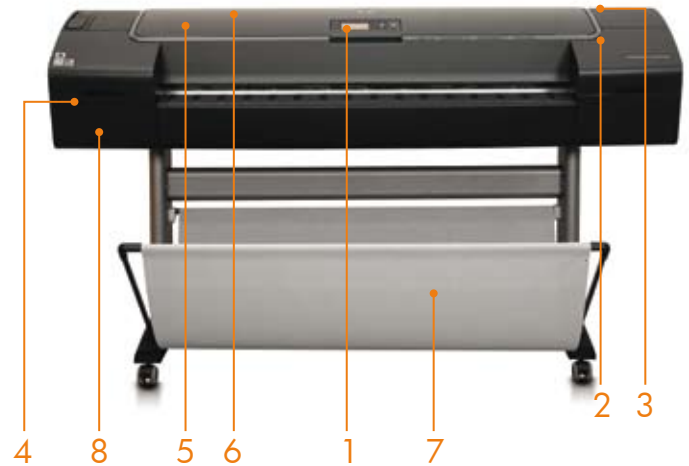


HP DESIGNJET Z2100

PHOTO PRINTER SERIES

1. LCD front panel and direct access keys for ink supply maintenance and print message alerts
2. Accommodates single-sheet media up to 610 mm/24 inches wide (24-in printer) or up to 1118 mm/44 inches (44-in printer)
3. Mounted on the carriage, the embedded spectrophotometer brings accurate profiling and precision color calibration
4. Rear Hi-Speed USB 2.0 and 10/100Base-T Ethernet connection for TCP/IP. Additional free slot for optional network connectivity with 1 EIO HP Jetdirect card
5. Rear bypass slot handles heavy and rigid media of weights up to 500 g/m² and thickness up to 0.8 mm/31.5 mil
6. Roll feed (located at the back of the printer) feeds rolls up to 610 mm/24 inches wide (for 24-in printer) or up to 1118 mm/44 inches (for 44-in printer) and 91 m/300 ft long
7. Media bin *
8. HP Vivera pigment ink set with 4 pl & 6 pl drop size for prints that resist fading for over 200 years¹²

*Not included in the box in Asia Pacific for 24-in model



Optional accessories



The HP-GL/2 Upgrade Kit improves line quality and network availability with the HP-GL/2 software key. The printer—rather than the computer—processes files for improved operating efficiency. Store and reprint files from the printer queue and print legacy HP-GL/2 files.



The HP Advanced Profiling Solution, powered by X-Rite technology, offers a powerful, automated, and cost effective color management system that works seamlessly with the HP embedded spectrophotometer. It enables an easy-to-use yet sophisticated end-to-end calibrated and color managed workflow that saves you time and money and eliminates the hassle of off-line measurement devices. Also included in the box is a monitor calibrator.

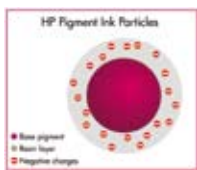


The EFI Designer Edition 5.1 XL for HP is a powerful, yet cost effective digital proofing system that allows full control over digital proofing needs. Together, EFI and HP enable designers, photographers and other creative professionals to easily generate proof-quality prints with sharp detail, color accuracy and smooth tonal transitions.



Additional 24 and 44-in spindles enable professional photographers and graphic designers to easily switch between media rolls.

Key technologies



Electrosteric Encapsulation Technology

HP Vivera pigment inks offer outstanding image quality and fade resistance on a wide variety of photo and fine art media, along with water resistance on a range of HP creative and specialty media. HP's proprietary Electrosteric Encapsulation Technology optimizes the pigment chemistry and ink properties for stability and performance to ensure a broad color gamut, print permanence, excellent gloss uniformity, and reliable, accurate, and consistent printing.



The HP embedded spectrophotometer with i1 Color Technology from X-Rite is mounted on the printer carriage and revolutionizes professional color workflows by automating media profiling. It allows users to automatically generate custom RGB ICC profiles for their preferred media and provides accurate measurements for printer calibration that delivers print-to-print and printer-to-printer color consistency. Also, with the optional HP Advanced Profiling Solution, you can edit and modify existing profiles and create CMYK profiles.



HP's 8-ink printing system, which is made up of the exclusive HP Vivera pigment ink formulation technology and the HP Three-black ink set, ensures exceptional color accuracy and consistency: a valuable tool for graphic designers and prepress professionals who need repeatable results.



An extensive media portfolio: HP offers a portfolio of 11 photo papers, 13 digital fine art papers, 4 proofing papers, 13 bond and coated papers, and over 30 other HP media. All have been tested with HP 70 Vivera pigment inks to deliver consistent, museum-quality prints that withstand the demands of handling, display and storage expected of professional prints.

Services

The HP Start-up kit, HP Knowledge centre, and HP Printer Utility are all complimentary services provided by HP to assist you during installation and throughout your printing workflow; visit www.hp.com/go/graphic-arts for full details. For enhanced services, purchase from the HP Professional Graphic Services portfolio, which includes:

- **HP Installation Care Pack Services:** Easier to get your printer up and running in minimum time. Standalone and network options available.
- **HP Care Pack and Post Warranty Services:** Reduce downtime and mitigate the risk of unbudgeted repair costs. 3-5 year warranty extensions available. See back page for ordering information and visit www.hp.com/go/pgs for more details on all options.

Designed for professionals



Graphic designers

- Express your creativity and sell your ideas with high-impact color and black-and-white concept and packaging proofs.
- Integrate the optional EFI Designer Edition RIP 5.1 for HP (available from HP) to enable CMYK workflow support, PostScript® & PDF printing, and accurate spot color management.

«The machine creates the ICC profiles for you and does the calibration for you, which are massive issues for artists. This enables the media and inks to work together, regardless of the paper used.»

Patrick Morgan, FARM CREATIVE

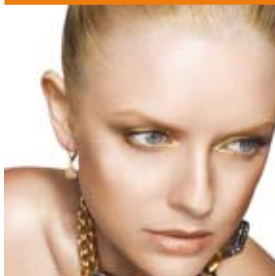


Prepress proofing

- Produce accurate and stable proofs that meet prepress standards.
- Save time and money and drastically shorten your workflow thanks to automated generation of ICC profiles.
- To achieve an advanced proofing solution, integrate one of a range of commercially available proofing RIPs from industry leaders such as CGS, EFI, GMG, and Kodak. These leading prepress RIPs combine with the printer to form a cost-effective solution that verifies the press-standard color compliance of your proofs. Visit www.hp.com/go/Z2100/solutions to discover the many proofing RIPs driving the HP Designjet Z2100 Photo Printer series.

«By combining the embedded i1 color spectrophotometer, together with the latest printing technologies found in the new HP Designjet Z Photo Printer series, new, ground-breaking standards in large-format printing have been established, providing the industry with a new benchmark.»

Francis Lamy, Executive VP and CTO X-Rite



Commercial photography

- Create beautiful, large-format color and black-and-white exhibition prints, portfolios, and magazine proofs.
- Added to Adobe Lightroom® is a Calibrate Printer button, enabling you to launch the printer's color management tools directly from the application, the result of close collaboration between HP and Adobe®.
- Avoid double color management when using Adobe Photoshop® CS3 and CS4 Improved Printing Experience—co-developed by HP—for both Mac and Windows Vista®.

«The driver options are wonderful. They'll save huge amounts of paper. In the past we often got either double color management or none at all.»

Bruce Fraser, author of Real World Photoshop and Real World Color Management



Display graphics and posters

- Impress your clients, persuade colleagues, and facilitate knowledge-sharing with spectacular, long-lasting, and water-resistant posters and presentations.
- Print full-color marketing collateral, point-of-sales material, and tradeshow decoration, all with consistent colors and on an existing range of over 70 Original HP media, as well several other commercially available media.
- Create stunning large-format posters that convey your message loud and clear. For a 3 month trial period you can use the optional Serif PosterDesigner Pro for HP with this printer.



Technical imaging and mapping

- Produce impressive renderings and visualizations, photorealistic prints, maps, satellite images, and presentation panels with superior quality, consistency, and durability.
- Architects, engineers, construction managers, industrial designers, and GIS specialists all benefit from easy, reliable, and predictable printing of high-definition technical imaging prints.
- Enjoy improved line quality and network availability with the HP-GL/2 Software Key. This optional accessory allows you to store and reprint files from the printer queue and print legacy HP-GL/2 files.
- Reprint batch HP-GL/2, PPT, and PDF files easily—with the simple click of a button—thanks to the free HP Instant Printing Utility. Reprint full projects easily by simply selecting the batch you want.

HP DESIGNJET Z2100

PHOTO PRINTER SERIES

TECHNICAL SPECIFICATIONS

Print Speed ^A	
Best	15 min/page on A1/D or up to 1.6 m ² /hr (17 ft ² /hr) on glossy media
Normal	7.9 min/page on A1/D or up to 3.5 m ² /hr (38 ft ² /hr) on glossy media 4.2 min/page on A1/D or up to 6.9 m ² /hr (72 ft ² /hr) on coated media
Draft	2 min/page on A1/D or up to 13.9 m ² /hr (150 ft ² /hr) on coated media
Printing	
Print resolution	Up to 2400 x 1200 optimized dpi
Margins (top x bottom x left x right)	Roll: 5 x 5 x 5 mm (0.2 x 0.2 x 0.2 in) (full bleed available on glossy/satin roll media). Sheet: 5 x 17 x 5 x 5 mm (0.2 x 0.67 x 0.2 x 0.2 in)
Technology	HP Thermal Inkjet
Ink types	HP Vivera pigment inks
Ink colors	8: cyan, magenta, yellow, light cyan, light gray, light magenta, matte black, photo black
Ink drop	4 pl (L, M, lg, pK), 6 pl (C, M, Y, mK)
Ink cartridge size	130 ml
Printheads	4
Nozzles	2112 per printhead (2 colors per printhead, 1056 nozzles per color)
Line accuracy	+/- 0.2% ^B
Lighfastness	Approximately 200 years ^C fade resistance
Water resistance	Water-resistant on a range of HP creative and specialty media
Image quality	
Color accuracy	Median < 1.6 dE2000, 95% of colors < 2.8 dE2000 ^D
Short term color stability	< 1 dE2000 in less than 5 minutes ^E
Print-to-print repeatability	Average < 0.5 dE2000, 95% of colors < 1.4 dE2000 ^F
Maximum optical density	4 L* min / 2.5 D ^F
Media	
Handling	Sheet feed, roll feed, automatic cutter (cuts all media except canvas)
Types	Photographic, proofing, fine art printing material, self-adhesive, banner and sign, bond and coated, film, backlit, fabric/textile
Weight	Up to 500 g/m ² (133 lb)
Size	24-in models: 216 x 279 to 610 x 1676 mm (8.5 x 11 to 24 x 66 in) sheets; 279 to 610 mm (11 to 24 in) rolls. 44-in models: 216 x 279 to 1118 x 1676 mm (8.5 x 11 to 44 x 66 in) sheets; 279 to 1118 mm (11 to 44 in) rolls
Thickness	Up to 0.8 mm (31.5 mil)
Memory	
	128 MB standard memory, 80 GB hard disk
Connectivity	
Interfaces (standard)	1 Fast Ethernet (10/100Base-T) port, 1 Hi-Speed USB 2.0 certified port, 1 EIO Jetdirect accessory slot
Interfaces (optional)	HP Jetdirect EIO print servers
Print languages	HP PCL 3 GUI
Supported operating systems	
	Windows Vista (32 and 64-bit), Windows XP [®] Home and Professional (32 and 64-bit), Window Server 2008 and 2003 (32 and 64-bit), OS X v 10.4 and 10.5
Dimensions (w x d x h)	
Printer with stand ^G	24-in models: 1262 x 690 x 1047 mm (49.7 x 27.2 x 41.2 in) 44-in models: 1770 x 690 x 1047 mm (69.7 x 27.2 x 41.2 in)
Shipping	24-in models: 1470 x 780 x 740 mm (57.8 x 30.7 x 29.1 in) (NA, LAR, EMEA) 1660 x 770 x 590 mm (65.3 x 30.3 x 23.2 in) (AP) 44-in models: 1965 x 780 x 780 mm (77.3 x 30.7 x 30.7 in)
Weight	
Printer with stand ^G	24-in models: 65 kg (143 lb). 44-in models: 86 kg (189 lb)
Shipping	24-in models: 102 kg (225 lb) (NA, LAR, EMEA); 88.5 kg (195) (AP) 44-in models: 123 kg (271 lb)
What's in the box	
	HP Designjet Z2100 Photo Printer, spindle, printheads (4 x 2 colors), introductory ink cartridges (x8), Original HP media roll, stand ^G , rear tray, adaptor kit (3 in) for spindle (x2), quick reference guide, setup poster, USB cable, power cord, HP Start-up kit including printer software
Environmental ranges	
Operating temperature	5 to 40° C (41 to 104° F)
Recommended operating temperature	15 to 35° C (59 to 95° F)
Storage temperature	-25 to 55° C (-13 to 131° F)
Recommended operating humidity	20 to 80% RH
Storage humidity	0 to 95% RH
Acoustic	
Sound pressure, active	49 dB(A)
Sound pressure, standby	29 dB(A)
Sound power, active	6.5 B(A)
Sound power, standby	4.4 B(A)
Power consumption	
Maximum	200 watts
Power requirements	Input voltage (auto ranging): 100 to 240 VAC (+/- 10%), 50/60 Hz (+/- 3 Hz), 2 A max
Certification	
Safety	IEC 60950-1 compliant, EU LVD and EN 60950-1 compliant, certified by CSA for Canada and US, Argentina IRAM, Singapore PSB, Russia GOST, China CCIB, Taiwan BSMI
Electromagnetic	Compliance for Class B products: EU (EMC Directive), USA (FCC rules), Canada (DoC), Australia (ACA), New Zealand (MoC), China (CCC), Japan (VCCI), Korea (MIC) and Taiwan (BSMI)
ENERGY STAR [®] qualified models	see: http://www.hp.com/go/energystar
Warranty	
	One-year limited hardware warranty

ORDERING INFORMATION

Product	
Q6675C	HP Designjet Z2100 24-in Photo Printer
Q6677C	HP Designjet Z2100 44-in Photo Printer
Accessories	
Q6692B	HP-GL/2 Software Key
Q6695A	HP Advanced Profiling Solution Software
Q6701A	HP Advanced Profiling Solution Software AP
Q6643D	EFI Designer Edition 5.1 RIP for HP (XL) Intl
Q6644D	EFI Designer Edition 5.1 RIP for HP (XL) Japan
CN088A	Serif PosterDesigner Pro for HP
Q6663A	HP Designjet Z2100 and Z3x00 24-in Stand (AP only)
Q6700A	HP Designjet Z2100 and Z3x00 24-inch Spindle
Q6699A	HP Designjet Z2100 and Z3x00 44-inch Spindle for Graphics
Printheads	
C9404A	HP 70 Matte Black and Cyan Printhead
C9405A	HP 70 Light Magenta and Light Cyan Printhead
C9406A	HP 70 Magenta and Yellow Printhead
C9407A	HP 70 Photo Black and Light Gray Printhead
Ink cartridges	
C9448A	HP 70 130-ml Matte Black Ink Cartridge
C9449A	HP 70 130-ml Photo Black Ink Cartridge
C9451A	HP 70 130-ml Light Gray Ink Cartridge
C9452A	HP 70 130-ml Cyan Ink Cartridge
C9453A	HP 70 130-ml Magenta Ink Cartridge
C9454A	HP 70 130-ml Yellow Ink Cartridge
C9455A	HP 70 130-ml Light Magenta Ink Cartridge
C9390A	HP 70 130-ml Light Cyan Ink Cartridge
Ink cartridge twin packs	
CB339A	HP 70 2-pack 130-ml Matte Black Ink Cartridges
CB340A	HP 70 2-pack 130-ml Photo Black Ink Cartridges
CB342A	HP 70 2-pack 130-ml Light Gray Ink Cartridges
CB343A	HP 70 2-pack 130-ml Cyan Ink Cartridges
CB344A	HP 70 2-pack 130-ml Magenta Ink Cartridges
CB345A	HP 70 2-pack 130-ml Yellow Ink Cartridges
CB346A	HP 70 2-pack 130-ml Light Magenta Ink Cartridges
CB351A	HP 70 2-pack 130-ml Light Cyan Ink Cartridges
Media	
Q7991A	HP Premium Instant-Dry Gloss Photo Paper 24 in x 75 ft/610 mm x 22.9 m
Q7992A	HP Premium Instant-Dry Satin Photo Paper 24 in x 75 ft/610 mm x 22.9 m
Q6626A	HP Super Heavyweight Plus Matte Paper 24 in x 100 ft/610 mm x 0.5 m
C6029C	HP Heavyweight Coated Paper 24 in x 100 ft/610 mm x 30.5 m
C6775A	HP Colorfast Adhesive Vinyl 36 in x 40 ft/914 mm x 12.2 m
Q1898B	HP Opaque Scrim 36 in x 50 ft/914 mm x 15 m
C6787A	HP Banners with Tyvek [®] 36 in x 50 ft/914 mm x 15 m
Q7973A	HP Matte Litho-realistic Paper 36 in x 100 ft/914 mm x 30.5 m
US, Europe only	
Q8663A	HP Professional High-gloss Contract Proofing Paper 24 in x 100 ft/610 mm x 30.5 m
Q7971A	HP Professional Semi-gloss Contract Proofing Paper 24 in x 100 ft/610 mm x 30.5 m
Q6626A	HP Super Heavyweight Plus Matte Paper 24 in x 100 ft/610 mm x 0.5 m
Q1968A	HP Proofing Matte 24 in x 100 ft/610 mm x 30.5 m
Q8732A	HP Hahnemühle Smooth Fine Art Paper 265 g/m ² 24 in x 35 ft/610 mm x 10.7 m
Q8736A	HP Hahnemühle Textured Fine Art Paper 265 g/m ² 24 in x 35 ft/610 mm x 10.7 m
Q1984A	HP Hahnemühle Watercolor Paper 36 in x 38 ft/914 mm x 11.58 m
Q8741A	HP Aquarella Art Paper 24 in x 35 ft/610 mm x 10.7 m
Service & support	
UF028PA/PE	HP 1yr Post Warranty Next-Business-Day Onsite Service
UF017A/E	HP Care Pack, Next Business Day Onsite, 3 years
UF018A/E	HP Care Pack, Next Business Day Onsite, 4 years
UF019A/E	HP Care Pack, Next Business Day Onsite, 5 years
H7604A/E	HP Care Pack, Installation Service
H4518A/E	HP Care Pack, Installation with network configuration

For more HP Large Format Media substrates and sizes please visit us online at: www.hp.com/go/designjet/supplies

- (A) Mechanical printing time. Measured on a 44-in model.
(B) +/- 0.2% of the specified vector length or ±0.1 mm (whichever is greater) at 23° C (73° F), 50-60% relative humidity, on A0/E printing material in Best or Normal mode with HP Matte Film roll feed.
(C) Display permanence rating by Wilhelm Imaging Research, Inc. on a range of HP creative and specialty media. See www.hp.com/go/supplies/printpermanence.
(D) ICC absolute colorimetric accuracy on HP Proofing Matte paper.
(E) With HP Premium Instant Dry Photo Satin media, right after calibration.
(F) With HP Premium Instant Dry Photo Gloss media.
(G) Stand not included in the box in Asia Pacific for 24-in models.

For more information, visit our website at www.hp.com/go/designjetZ2100

© Copyright 2006, 2007, 2009 Hewlett-Packard Development Company, LP. The information contained herein is subject to change without notice. The only warranties for HP products and services are set forth in the express warranty statements accompanying such products and services. Nothing herein should be construed as constituting an additional warranty. HP shall not be liable for technical or editorial errors or omissions contained herein. Windows Vista and Windows XP are U.S. registered trademarks of Microsoft Corporation. ENERGY STAR and the ENERGY STAR mark are registered U.S. marks. Adobe, Adobe Photoshop, Adobe Lightroom, and PostScript are trademarks of Adobe Systems Incorporated. PANTONE and other Pantone, Inc. trademarks are the property of Pantone, Inc. PANTONE Colors displayed herein may not match PANTONE-identified standards. Consult current PANTONE Color Publications for accurate color.

4AA0-6246ENW, June 2009

